



20
23

HEALTH BUILDERS

ANNUAL
REPORT



About Health Builders

Since 2007, Health Builders has worked to address fundamental issues that prevent access to quality health care services in rural Rwanda. Through our unique, collaborative partnership with Rwanda's Ministry of Health (MOH), we offer training and mentorship, provide life-saving technology and equipment, and construct health facilities that improve thousands of lives.

WE BUILD ENDURING SYSTEM-WIDE CHANGE

ACCESS

Making health care available to everyone living in rural Rwanda

QUALITY

Improving care, safety, and health outcomes for patients and staff

SUSTAINABILITY

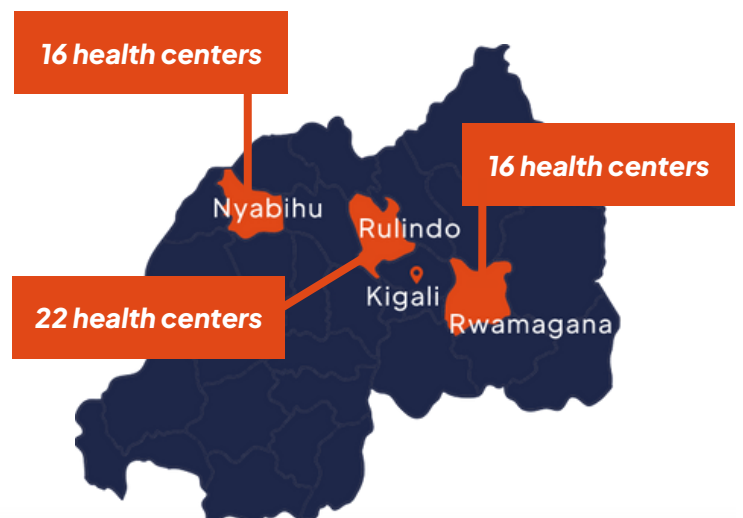
Creating solutions that endure and allow for growth

Health Builders focuses its interventions at the primary health centers facilities and villages where more than 90% of Rwandans receive care.

Our goal is to supply health care providers with the knowledge, skills, and resources needed to give patients a high-quality standard of care.

OVERCOMING CHALLENGES

Health Builders is committed to addressing inadequate knowledge and skills among health care providers, limited health care infrastructure, deficient life-saving technologies, and poor community awareness on disease prevention and healthy lifestyles.



Serving more than 1 million people





BASED IN RWANDA, LED BY RWANDANS

Our commitment to the communities we serve is reflected in Health Builders' all-Rwandan staff. We develop trust and confidence because we understand the special uniqueness of our country, our culture, our languages, and our people.

Our staff works closely with local partners to ensure the solutions are appropriate and sustainable for each community. They provide a range of professional expertise, including clinical medicine, public health, finance, and information technology.

LEADERSHIP TEAM



**MICHEL
MUSILIKARE**

Executive Director



**ELIAS
SEBUTARE**

Director of Programs



**DIDIER
UWIZERA**

Director of Data
Management and M&E



**ENOCK
DUSHIMIMANA**

Director of Administration
and Finance

Training & Mentoring Health Workers

The main focus at Health Builders is the individual coaching and mentorship of health center workers. Our approach combines training individuals on procedures, standards, or generally accepted best practices and mentorship. Our skilled staff sit down one-on-one with health workers to address their unique challenges.

FOSTERING LEADERSHIP & QUALITY CARE

Health Builders trained and mentored 936 health care providers on Reproductive, Maternal, Neonatal, Child and Adolescent Health (RMNCAH), Non-Communicable Diseases (NCDs), Quality Improvement (QI), Infection Prevention and Control (IPC), data and resource management across 52 primary health care centers in Rwamagana, Rulindo, and Nyabihu Districts.

Performance Assessment Results:

Conducted March - April 2023

34% INCREASE IN LEADERSHIP PERFORMANCE

From 2016-2022, management and leadership across 52 health centers increased by an average of 34%

22% INCREASE IN QUALITY OF CARE

From 2019-2022, quality of care across 52 health centers increased by 22%



ENHANCING TREATMENT FOR YOUNG CHILDREN

Health Builders trained and mentored health care providers on Integrated Management of Childhood Illnesses (IMCI).

83% of children under five years received proper treatment for the most common childhood infectious diseases (malaria, diarrhea, and pneumonia) in 2022 compared to the baseline of 63%.

Life-Saving Technology & Equipment

With appropriate, simple, and affordable equipment and technology, health care workers can better track data and make accurate diagnoses, ultimately saving lives. Technology and equipment are provided to local districts and health facilities by Health Builders, thanks to our partnerships with various organizations.

PROVIDING ACCESS TO OBSTETRIC ULTRASOUND SERVICE

The obstetric ultrasound program's impact at 31 health centers in Rwamagana and Nyabihu Districts is exceptional, conducting thousands of scans and identifying high-risk pregnancies for expectant mothers.

Without ultrasound equipment at our health centers, mothers would otherwise have to travel more than two hours to access the service.

Previously ultrasound machines were only present at district hospitals, which required a lengthy referral process to transfer pregnant women to these facilities for ultrasound scanning.

MORE SCANS, MORE LIVES SAVED

Obstetric ultrasounds and the training of midwives and nurses in the rural primary health care centers provide thousands of expectant mothers access to quality perinatal care.

Ms. Josiane Umutoni, age 22, from Gahoko village, Nyabihu District shared how a nurse's quick thinking and an ultrasound scan saved her baby's life.

(Please see next page)

38,411 ULTRASOUND SCANS

From January 2020–2023, 38,411 scans were done for expectant mothers

MORE THAN 2,000 HIGH RISK PREGNANCIES IDENTIFIED

2,028 high-risk pregnancies were identified and referred to hospitals from 2020 to 2023





MORE SCANS, MORE LIVES SAVED: A STORY FROM A BENEFICIARY

“When I was pregnant, I felt an unusual pain and went directly to the health center. The nurse thought I was in labor and getting close to delivery so she admitted me. As time went on though, the contractions disappeared.

The staff decided to discharge me with a follow-up appointment. But before discharging me, the nurse made the decision to check the fetus with an obstetrical ultrasound scan. She found that the water inside the womb was not enough and the fetus was distressing.

Therefore, she immediately called an ambulance for an emergent transfer to the district hospital where I delivered a healthy baby by cesarean section.”

- Ms. Josiane Umutoni, Nyabihu District



Construction Projects

To ensure that all communities have access to quality health care, Health Builders constructs health centers and health posts. Existing facilities in poor condition are also renovated. All of these facilities are easily accessible for even the most remote communities.

LAUNCHING THE NEW MWULIRE HEALTH CENTER

In May 2023, Health Builders officially launched a new health center in Mwulire, the only sector in the three districts supported by Health Builders that didn't have a health center.

This health center serves over 34,000 people residing in Mwulire Sector of Rwamagana District. As of December 2023, more than 18,500 people were consulted at this health center, including women and children.



OPENING 3 NEW HEALTH POSTS

In May 2023, Health Builders opened three new health posts in Rulindo District. By building more health posts in rural communities, we are making health services more accessible while also reducing the workload at health centers and district hospitals.

From February – December 2023, these new health posts received a total of 6,832 patients, including 1,240 children under five years old.

Digitization of the Health Builders M&E Tool

Assessments demonstrate that improved management and enhanced clinical care directly leads to quality health care outcomes, while continuing to address gaps and find new ways to improve the entire health care system. Our measurement and evaluation (M&E) tool is now digital, which will continue to help health centers significantly improve.

PERFORMANCE ASSESSMENT HIGHLIGHTS

In October 2023, Health Builders shared findings from annual health center performance assessments, including exciting improvements in resource management, quality of care, and patient and staff satisfaction.

Improved Resource Management and Quality of Care at AVEGA Health Center

AVEGA, one of the health centers in Rwamagana, recorded increases in both areas from 2021-2022:

QUALITY OF CARE

Increased by 38%

(from 52% to 90%)

RESOURCE MANAGEMENT

Increased by 4%

(from 82% to 86%)

Increased Patient and Staff Satisfaction at Nyagasambu Health Center

Nyagasambu Health Center achieved a significant improvement in both staff and client satisfaction rates in 2022:

STAFF SATISFACTION

Increased by 32%

(from 53% to 85%)

CLIENT SATISFACTION

Increased by 41%

(from 44% to 85%)



“Our hard work, resilience, and support from different partners such as Health Builders especially in improving the management of the available resources has helped us [by] building team work, transparency, and improving staff welfare, which are some of the key factors behind our current success... We have huge appreciations for Health Builders’ support.”

- Ms. Chantal Gahongayire, Head of AVEGA Health Center

Educational Partnerships



Our long-standing partnerships with the Medical College of Wisconsin and Global Health Corps are shaping the future of health care in rural Rwanda. Through partnerships with accredited educational organizations, we not only address current challenges but also build up the capability to solve future ones.

TWO INNOVATIVE PREVENTION PROJECTS

As a part of our ongoing partnership with the Medical College of Wisconsin (MCW), Health Builders hosted two students from the end of May through June 2023. Each selected a unique pilot project to be implemented across 15 health facilities in the three districts supported by Health Builders.

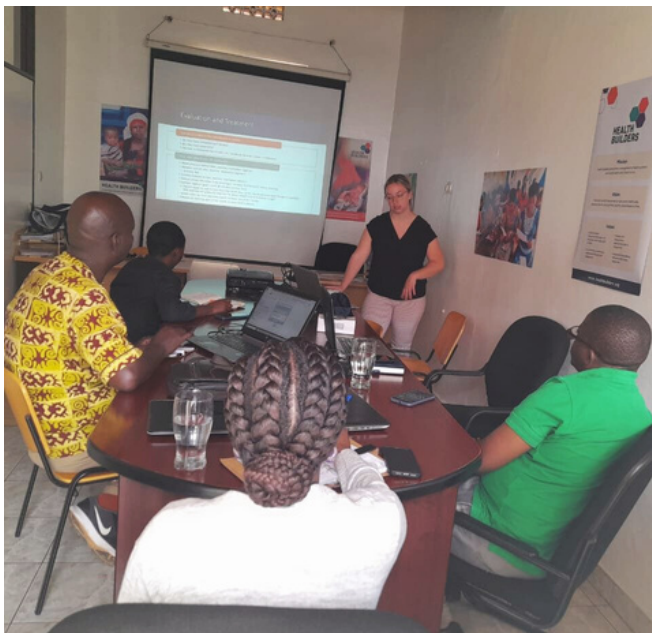


Preventing Amputations Through Training & Mentoring

Emily Krueger's project focused on screening for Peripheral Arterial Disease (PAD) to prevent complications such as amputation when detected early.

In collaboration with Rwanda Biomedical Center, Emily trained Health Builders' staff and health centers' nurses and doctors on the condition. This included screening using 15 new Doppler ultrasound machines provided by MCW, and the effective management of PAD.

This project was the first in Rwanda to document the prevalence of PAD and its risk factors!



Raising Awareness of Reproductive Health

In Rwanda, despite the socio-economic development, young people still face enormous challenges, including an alarming rise in the rate of adolescent pregnancies.

Alexa Wild, also from MCW, developed a unique digital story project to raise awareness about sexual reproductive health. Through working with youth peer educators, teen mothers, and health care providers, Alexa developed a story that will be used in fundraising and marketing for Health Builders' Adolescent Sexual & Reproductive Health and Rights program.

Empowering Future Global Health Leaders

Looking ahead to the future means investing in the next generation of leaders, innovators, and dreamers. Health Builders' partnerships with Medical College of Wisconsin and Global Health Corps make it possible to invite in new perspectives while staying on the cutting edge of health care solutions.

SPECIALIZED SOLUTIONS & EMERGING LEADERS

Since 2010, Health Builders has worked in close partnership with Global Health Corps (GHC), who provides the organization with Fellows from a wide range of backgrounds. The GHC Fellows have experience in measurement and evaluation, general medicine, public health, nursing, software development, and other skills.

Health Builders is currently hosting two Fellows. Frank Mwale is a Software Development Officer who is working to digitize Health Builders' Monitoring & Evaluation (M&E) tool. The other Fellow, Alexandre Dukundane, specializes in Quality Improvement. He is acting as a Clinical Associate, supporting Nyabihu District to strengthen health systems there.

In addition to providing invaluable expertise in specialized areas, our partnership with Global Health Corps has also empowered emerging leaders who are passionate about health, justice, equity, and equality. In fact, a number of Fellows have been invited to stay on as staff after their fellowship year.



“It was a life changing moment for me to join Health Builders through the Global Health Corps fellowship. From providing direct patient care in public health facilities, I was able to navigate the other side of health care and I was given an opportunity to contribute but also to learn from the impactful programs at Health Builders, aimed at improving access to quality health care for the rural communities in need in Rwanda.

Following the one year fellowship, I was retained at Health Builders where I have been given an opportunity to grow, to learn and to emerge into a capable leader.”

- Immaculate Kyarisiima

Biomedical Equipment Maintenance Support

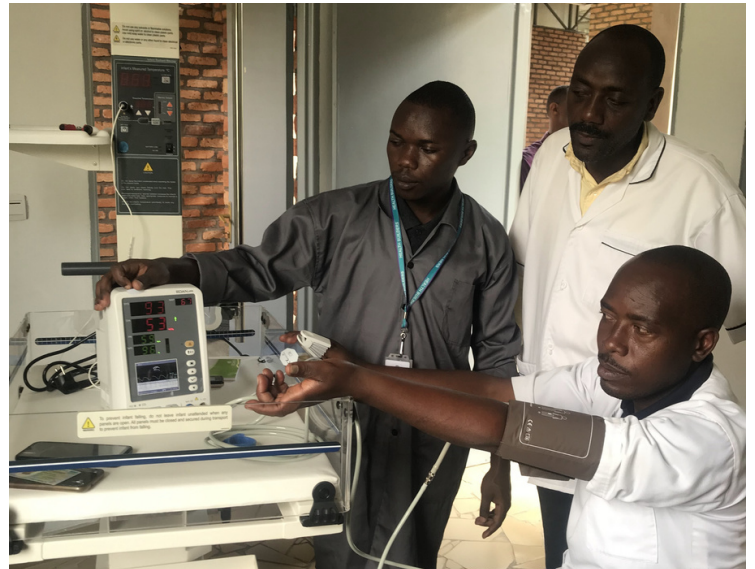
Biomedical Equipment Maintenance is an essential component of healthcare delivery and is implemented in partnership with Gould Family Foundation. The integration of this program into current interventions has enhanced the management of medical equipment by health facilities and improved the accuracy of diagnostics and promoted patient safety.

WHY THIS PROGRAM MATTERS

The aim of this program is to enhance healthcare equipment management in Health Builders' partner districts. Since its introduction in October 2022, the program has helped in addressing the gaps related to lack of or improper equipment installations, maintenance, servicing and usage

MAJOR ACHIEVEMENTS

- **Coaching health care workers on medical equipment inventory management**
- **98 staff trained on the proper utilization, handling, and user maintenance**
- **Installation of new equipment**
- **Servicing & repair of existing equipment**



PROGRAM SUCCESS STORY

In 2012, Mwiyanike Health Center in Nyabihu District received a donation of a sterilizer machine that unfortunately never worked due to installation challenges. When Health Builders started the biomedical equipment maintenance support in 2022, Mr. Straton, our Biomedical Engineer, fixed the issue and made the machine operable. The machine was then given to the neighboring Gakamba Health Center. For more than two years, this health center used to send medical devices for sterilization to the district Hospital 11 km away.

Mr. Jean Pierre Dusenge, the Disease Prevention Officer for Nyabihu District, commended Health Builders for our support to health facilities: "Health Builders uses an impactful working model that supports health facilities to address several health service challenges. They are enforcing the client-centered model in health facilities which promotes the quality of health care in all aspects."

Financial Summary

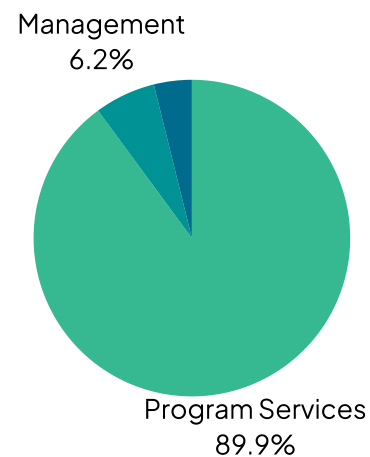
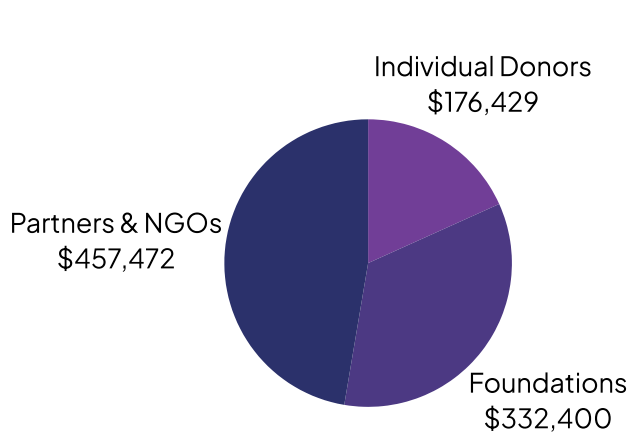
By focusing on program effectiveness and prudent financial management, Health Builders aims to continue amplifying its impact in the coming years. Moving forward, the team remains dedicated to maximizing the value of every contribution, ensuring that the organization continues to be a force for positive change in our communities.

Revenue

Individual Donors	\$176,429
Foundations	\$332,400
Partners & NGOs	\$457,472
Total Revenue	\$966,301

Expenses

Program Services	\$921,840
Management	\$63,869
Fundraising	\$39,680
Total Expenses	\$1,025,389



We extend our heartfelt gratitude to all our supporters, without whom achievements made would not be possible. Together, we look forward to a future filled with even greater accomplishments in pursuit of our shared vision.



- +1 303 598 5320
- info@healthbuilders.org
- #4 KG 632 St Kimihurura
Kigali, Rwanda
- 82 Nassau Street, #60282
New York, NY, 10038

Stay connected!

Follow us on social media



Join our email list

www.healthbuilders.org